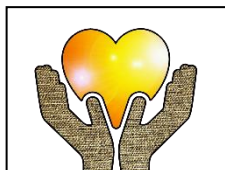


From your Finance Team

Financial Update



We are here to help

Thank you to those who have contacted the Accounts Office thus far during these difficult times. I am aware that the main focus of PCCs at the moment is to look after your communities and to keep the church going as best you can. There are some lovely life affirming stories in last week's Grapevine and I salute all your great work in helping those in need. In my own parish we have a good network of help and it has

been a privilege to participate in their work.

Clearly, worrying about PCC finances does not help in these difficult times. Please do not hesitate to contact your Archdeacon in the first instance and let me know liz.ashmead@salisbury.anglican.org : 07803 827457 of financial difficulties and we will do our best to help. Contact details for the two Mission and Stewardship officers are below so please use them if you need advice or a listening ear.

A few points to note: -

- Those with CCLA investments will be relieved to know their income is predicted to hold at least for this year
- The generosity of our members who give regularly by Standing Order or the Parish Giving Scheme ("PGS") is likely to underpin much of your income. The PGS offices remain open. They are available to handle new givers and also parishes wanting to register although things may take a bit longer than usual.

Once Easter has passed, I am looking to setting up a virtual meeting with Deanery Treasurers, to find out first-hand how the accounts team may be able to help in more tangible ways. Please pass on any comments to your Deanery Treasurer that you would like to be shared with us. This will include advice on encouraging online or regular giving; we are exploring what resources we can provide to help you talk about giving sensitively at this time e.g. suggested wording, email templates etc so please think about what you would find useful and let us know on the call.

I appreciate this is no help to you now, but we are actively looking at how to set up a system to aid treasurers complete accounts and financial returns more easily so that when all of this is over, we can relieve some of your burdens. If this proves helpful, we could look at meetings with individual parishes.

In terms of Diocesan finances, we have been looking at contingency measures to ensure that our cashflow remains strong and that we are best placed to help. We have strong support from our bank and have sold our bonds to create some income. There may be some assistance from the National Church although this so far directed to those Dioceses in crisis. As already advised, the AGM has been delayed to September so that we can set a budget for 2021 based on the reality at the time and sign off the accounts for last year with confidence.

I reaffirm that the Share count for 2020 has been abandoned. We will make out best estimates later in the year based on previous years' counts. We will communicate in more detail about this later in the year and all workings will be transparent and clear. Parishes that have experienced significant movement in numbers will be invited to contact their Archdeacon.

Lastly, we can accept expenses electronically – with text in the approval box to say who has approved this. If you can scan/photo accompanying receipts, then this is most helpful – if not please keep to submit at a later date. The post is still being monitored at Church House but only once a week so please try and use

email for documents and online banking as far as you can to keep everything going as efficiently as possible.

Please do keep in touch even if it is only to say hello and to hear a friendly voice. Although we are all working from home, the accounts team (Liz, Olivia, Carolyn and James) is continuing to function well and very happy to help.

You are all in our thoughts and prayers and please try and keep well and safe.

Liz Ashmead – Director Finance and Asset management

Useful details

Accounts:

liz.ashmead@salisbury.anglican.org

accounts@salisbury.anglican.org

Stewardship:

john.kilbee@salisbury.anglican.org

ian.bromilow@salisbury.anglican.org