



THE SALISBURY DIOCESAN
BOARD OF EDUCATION

Partnership Service Agreement

September 2022 to August 2023



Working Together with Your School or Trust



LIVING OUT GOD'S TRANSFORMING PRESENCE

THE SALISBURY DIOCESAN
BOARD OF EDUCATION

Working Together with your School

The SDBE are very pleased to warmly welcome you to our **Partnership Service Agreement (PSA)**, this document details our comprehensive offer to schools for 2022-23. We know how valuable schools find the provision of the PSA and this active and positive partnership has been identified through recent SIAMS inspections:

'Salisbury Diocese provides valuable training and support across a full range of church school issues. Its input on spirituality is deeply appreciated by staff and helps to shape the school's approach to spiritual development.'

'The school also has a close relationship with the diocese. As a result, there is a clear strategic direction as a church school.'

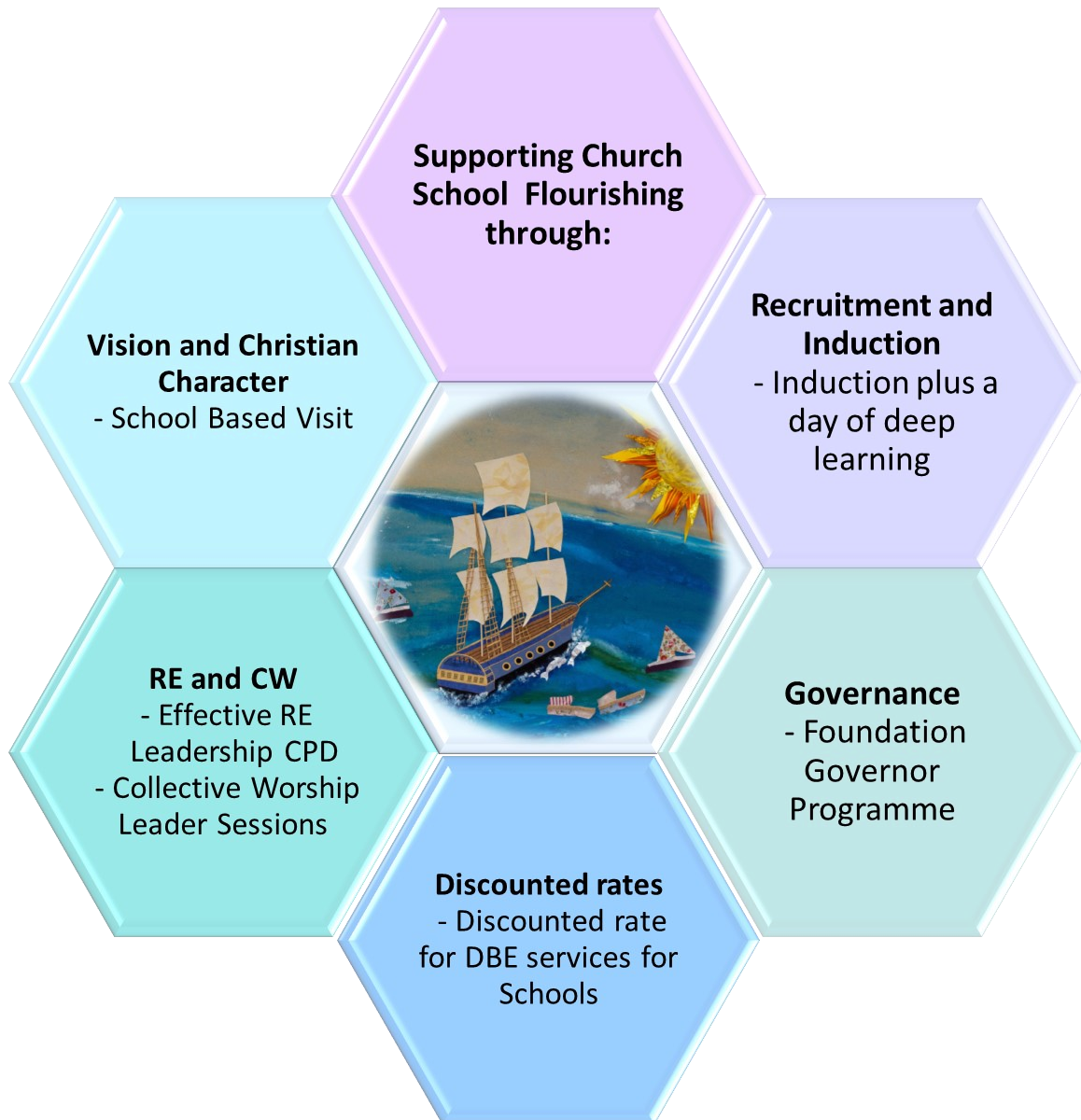
At the SDBE, we believe that our commitment to partnership working and our pledge to walk alongside you during this time of change in the educational landscape brings increased assurance, hope and enables even greater flourishing in your church school. With the government direction in education now widely shared, the SDBE have introduced a parallel programme of provision for schools in a multi academy trust family, this is named the **Programme for Church School Flourishing (PCSF)** details of this programme can be found [here](#).

As we walk alongside you we will gift the following provision:

- ◆ **Representing you through strategic engagement** with the Education Office of the Church of England, Ofsted, DfE, RSC, LAs, Teaching School Alliances
- ◆ **Advice about school estate and the formation of new schools** - we have much experience in this area
- ◆ **Governance** - strategic advice and administration support related to the appointment of Foundation Governors, Trustees and Members
- ◆ **SIAMS** - provision of a SIAMS Manager and the development of support to help you prepare for inspection and fulfilment as a church school
- ◆ **School / Academy / MAT Leader recruitment and induction** - support before and during the recruitment process and a visit to the new leader once in post (Head of School, Headteacher, CEO)
- ◆ **MAT development / Academy conversion** - the provision of a mixed article MAT landscape enabling schools to join local MATs
- ◆ **Provision of Diocese of Salisbury Academy Trust (DSAT)** - a potential home for any church school
- ◆ **Model Admissions Arrangements** - provided as a basis for your own policy. There is a statutory requirement for schools to consult on their admissions policy at least once every seven years
- ◆ **Strategic engagement with schools causing concern** - working with schools, MATs and education partners to better enable support for schools facing challenges
- ◆ **Work with Children and Young People in parishes & schools** - through the development of community hubs, to enable flourishing of children and young people
- ◆ **Support from our office-based Education Service Assistants**
- ◆ **Critical Incident Support** - from a telephone conversation to pastoral support on site
- ◆ **Provision of a Leavers Service** - in partnership with Salisbury Cathedral



The SDBE invites every church school to subscribe to the Partnership Service Agreement (PSA) at £575 +VAT and receive:



Please see separate documentation detailing all the available courses as part of the PSA Subscription at no extra cost



LIVING OUT GOD’S TRANSFORMING PRESENCE

THE SALISBURY DIOCESAN BOARD OF EDUCATION

In addition to the PSA the SDBE offers every church school a range of provision and tailored work, as priced below, bespoke to the needs and context of each school & academy. This provision is subsidised with a PSA subscription, the menu of support includes:

- ◆ A session for all stakeholders to establish or review their Christian ‘Vision and Values’, facilitated by a diocesan adviser - *Vision and Leadership*
- ◆ A mid-cycle SIAMS health check, Deep Dives into RE and/or CW to support SIAMS evaluation, including written reports - *Wisdom, Knowledge and Skills*
- ◆ Working with a diocesan adviser to further develop strategies for deeply Christian and effective RE - *The effectiveness of Religious Education*
- ◆ Working with a diocesan adviser to further develop strategies for deeply Christian and effective collective worship - *The impact of collective worship*
- ◆ Working with the school community to develop staff spiritual literacy, which enables children’s spiritual encounter and development opportunities - *Wisdom, Knowledge and Skills*
- ◆ Working with your diocesan adviser to refine how your vision encourages good mental health and well being and the flourishing of all – *Community and Living well together*
- ◆ Support to ensure deeply Christian and effective Foundation Governance (e.g. reviews; mentoring) - *Character Development: Hope, Aspiration and Courageous Advocacy*
- ◆ Preferential rate for academy conversion process

		Subsidised PSA Cost	Cost without PSA subscription
Bespoke support & training for individual schools	Follow up support	£150 + VAT	£225 + VAT
	Twilight (up to 2 hours)	£300 + VAT	£450 + VAT
	1/2 day (up to 3 hours)	£375 + VAT	£565 + VAT
	1 day (up to 6 hours)	£675 + VAT	£1025 + VAT
Centrally provided courses	Twilight	£50 + VAT	£100 + VAT
	1/2 day course	£50 + VAT	£100 + VAT
	1 day course	£75 + VAT	£150 + VAT
Virtual courses	Twilight	£25 + VAT	£50 + VAT
	1/2 day course	£25 + VAT	£50 + VAT
	1 day course	£50 + VAT	£100 + VAT