

Your gift matters

The Church of England is a Christian presence in every community in this nation. We share our faith and values in every city, town and village, serve our neighbours, worship together and maintain our wonderful buildings.

Salisbury Diocese's vision of Renewing Hope: Pray, Serve, Grow, envisages that presence in every community being maintained and deepened. The cost of this is met by the generosity of church members and supporters.

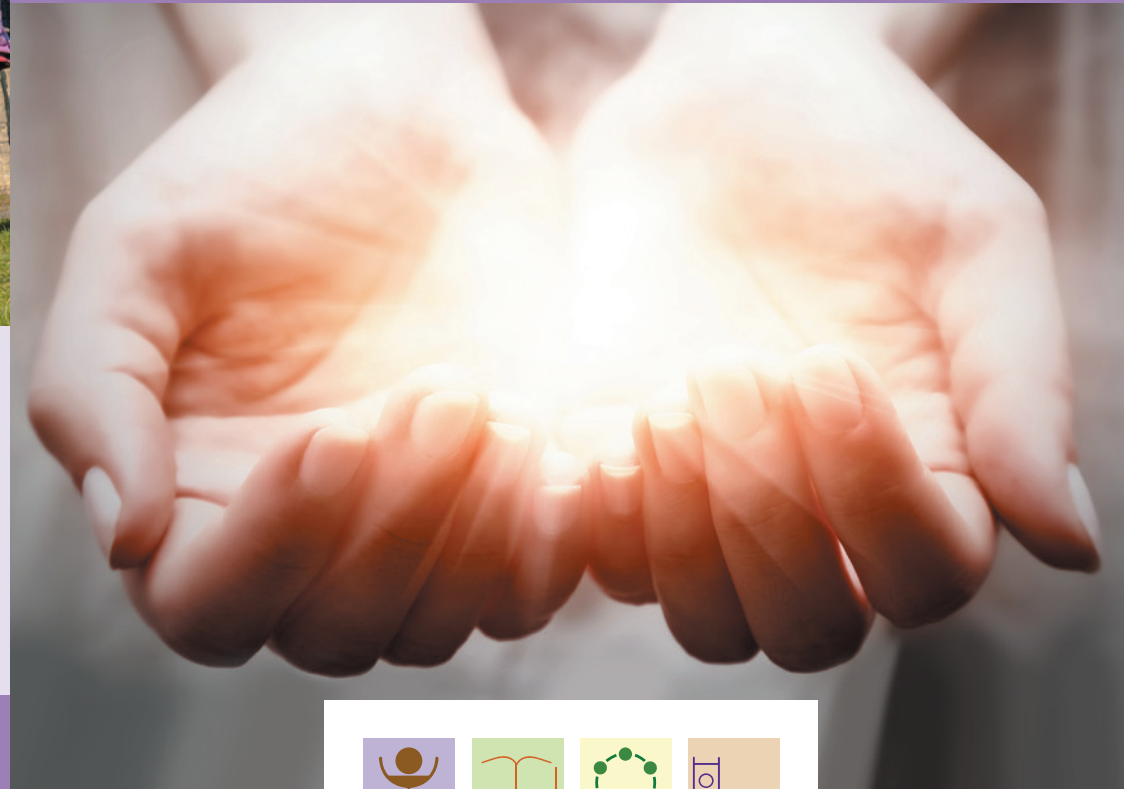
By giving through the Parish Giving Scheme, parishes spend less time fundraising and more time building the Kingdom of God.



"We have been enthusiastic users of the Parish Giving Scheme since 2018 and it has been an absolute lifeline over the period of the pandemic. PGS now accounts for about 80 of our 125 or so membership and including the gift aid recovered is sufficient to pay our Parish Share each month. Following the Generous Giving campaign we were able to increase the giving by about £4,000 per annum."

Alan, PCC Treasurer, St Michael and All Angels, Colehill

Giving regularly to your church through the Parish Giving Scheme



Join Parish Giving Scheme to support your church today

Online: www.parishgiving.org.uk – click on **Give Now** to find your parish

By phone: **0333 002 1271**, Monday to Friday 9am – 5pm
Or ask your church for a printed Gift Form



The Parish Giving Scheme is an easy way to give by Direct Debit, and helps your church with financial planning. Knowing that regular donations will be received enables us to expand our faith and grow our work in our communities, and offers some protection from unforeseen situations. Sign up today and join hundreds of givers who already support their church this way.

You can now sign up online, by phone or using the original Gift Form – find out more inside.

www.parishgiving.org.uk

 **THE CHURCH OF ENGLAND**
DIOCESE OF SALISBURY

For advice and support on all aspects of giving, fundraising and stewardship contact:

Anna Hardy
Giving Advisor, Salisbury Diocese
anna.hardy@salisbury.anglican.org
07500 831566 Monday to Friday

Renewing HOPE
Pray • Serve • Grow

 **THE CHURCH OF ENGLAND**
DIOCESE OF SALISBURY



“All things come from you and of your own do we give you” (1 Chron. 29:14)

Giving is one way in which we remember that what we have actually belongs to God and is entrusted to our care. To give generously is to be caught up in the overflow of God’s grace for when we give, we reflect the nature of God himself.

The bible is aware that our giving meets **real** needs. And we can certainly reassure ourselves that our giving will support our churches wherever the need is greatest.

But as Christians we don’t just give to a need, we need to give. Our giving is the overflow of God’s gift to us in Jesus:

‘you know the grace of our Lord Jesus Christ, that though he was rich, yet for your sake he became poor, so that you through his poverty might become rich’ (2 Cor. 8:9).

As a lovely old proverb says gratitude is the heart’s memory. Each time we give, we remember that what we keep and all we have is a gift from God. If giving is to help us remember the Giver, then what we give must be serious, generous and meaningful because we cannot give to God that which costs us nothing (2 Sam. 24:24).

Adapted from © Giving in Grace • www.givinginGrace.org

Jesus said:

“For where your treasure is, there your heart will be also” Matt 6:21

What we do with our money reveals our hearts, but generous giving can also release our hearts from the gravitational pull of wealth. Generosity is a discipleship decision that refuses to put money at the centre of our lives. But giving is more than a personal commitment. Giving is a shared act of worship because we travel together as God’s people. And giving is fundamentally confessional: what we give speaks about what has been given to me, to each of us in the grace and the gift of God.

Stewards of all

It is often said that Martin Luther believed we needed three conversions: of the heart, head and wallet – and that the last was the test of the reality of the first two conversions. The rich, biblical word ‘steward’ means that we own nothing but enjoy all; we give generously but also save and spend, budget and borrow responsibly. More than meeting needs, generous giving is the hallmark, the litmus test, of the faithfulness and accountability to which each steward is called (2 Cor. 4:2; Luke 16:1-15)

How does the Parish Giving Scheme work?

Giving regularly by Direct Debit is just like a traditional standing order donation, eg you can still give monthly, quarterly or annually, but there are several advantages to switching to Parish Giving Scheme – both to you, and your church.

Benefits to you

- You are in control of how much you give. You can login online, or telephone, to increase or decrease your gift whenever you want
- You can choose to remain anonymous
- You can opt to increase your gift automatically each year, in line with inflation, to protect the value of your gift. *If you choose this option you will receive an annual letter from the Parish Giving team advising you of the increase. You are able to opt not to go ahead with the increase.*
- The Direct Debit guarantee protects all gifts, making them safe and secure

Your church benefits

- Regular gifts help provide predictable cash flow. This helps churches to be both safe-guarded against unforeseen situations, and also able to invest in areas most important to growing our faith – whether that’s youth work, messy church, rural chaplaincy, or something else!
- Gift Aid is automatically collected, which means less administration work for your PCC Treasurer or Gift Aid Secretary.



Join Parish Giving Scheme to support your church today

Online: www.parishgiving.org.uk – click on **Give Now** to find your parish

By phone: **0333 002 1271**, Monday to Friday 9am – 5pm

Or ask your church for a printed Gift Form